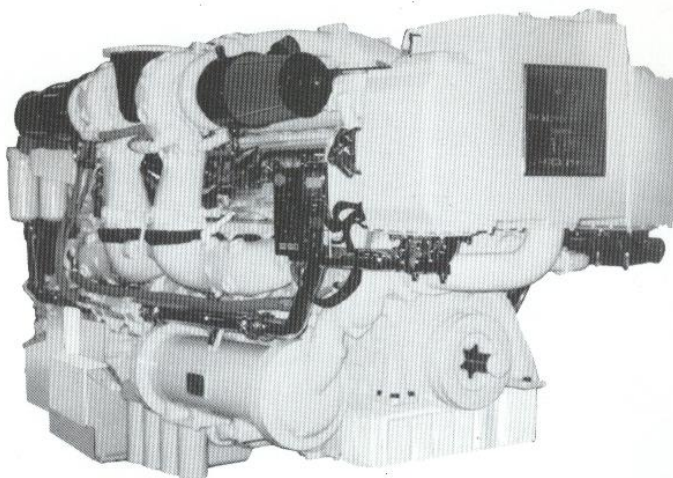


DETROIT DIESEL



**12V-149TI DDEC
1800 BHP**

Marine Pleasure Craft



General Specifications

Basic Engine	12V-149TI
Model – Port	9122-7C01
Starboard	9122-7C00
Description	Turbocharged-Raw water intercooled with Bypass Blower
Control	DDEC
Number of Cylinders	12
Bore and Stroke	5.75 in x 5.75 in (146 mm x 146 mm)
Displacement	1792 cu in (29.36)
Compression Ratio	14.0 to 1
Weight (dry)	11140 lbs (5058 kg)

Rated Power Output—Maximum

Gross Power	1800 BHP (1343 kW) @ 2100 RPM
Net Power	1740 SHP (1298 kW) @ 2100 RPM

Equipment Specifications

Alternator—24 volt, 70 amp
Appearance Package — Chrome plating and polished castings with premium paint
Cooling System—Cast expansion tank, dual heavy duty raw water pumps, and coolant heater
Crankcase vapor collectors with silencers
DDEC—Detroit Diesel Electronic Controls
Engine Mounts—Resilient mounts for both engine and marine gear
Exhaust System—Cast jacket water-cooled manifolds and turbine housings
Flywheel Housing—SAE #0
Fuel System—Cam operated electronic unit injectors with low pressure USCG type A external hoses, fuel filters and cooler
Lube Oil Filter—Full flow, spin-on
Marine Gear—Available with Detroit Diesel-433G, with trolling valve and trailing pump
Oil Pan—Cast, designed for 0°-8° inclination angle, dual sumps
Starting Motors—Two 24 volt electric

Rating conditions: ISO 3046, SAE J1349, SAE J1228
77°F (25°C) and 29.31 in. Hg. (99 kPa) Barometer (Dry)

For a complete listing of standard and optional equipment,
consult your authorized Detroit Diesel Corporation representative.

Photograph illustrates a typical marine engine